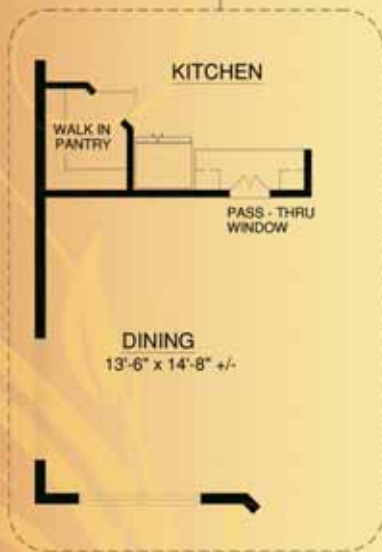
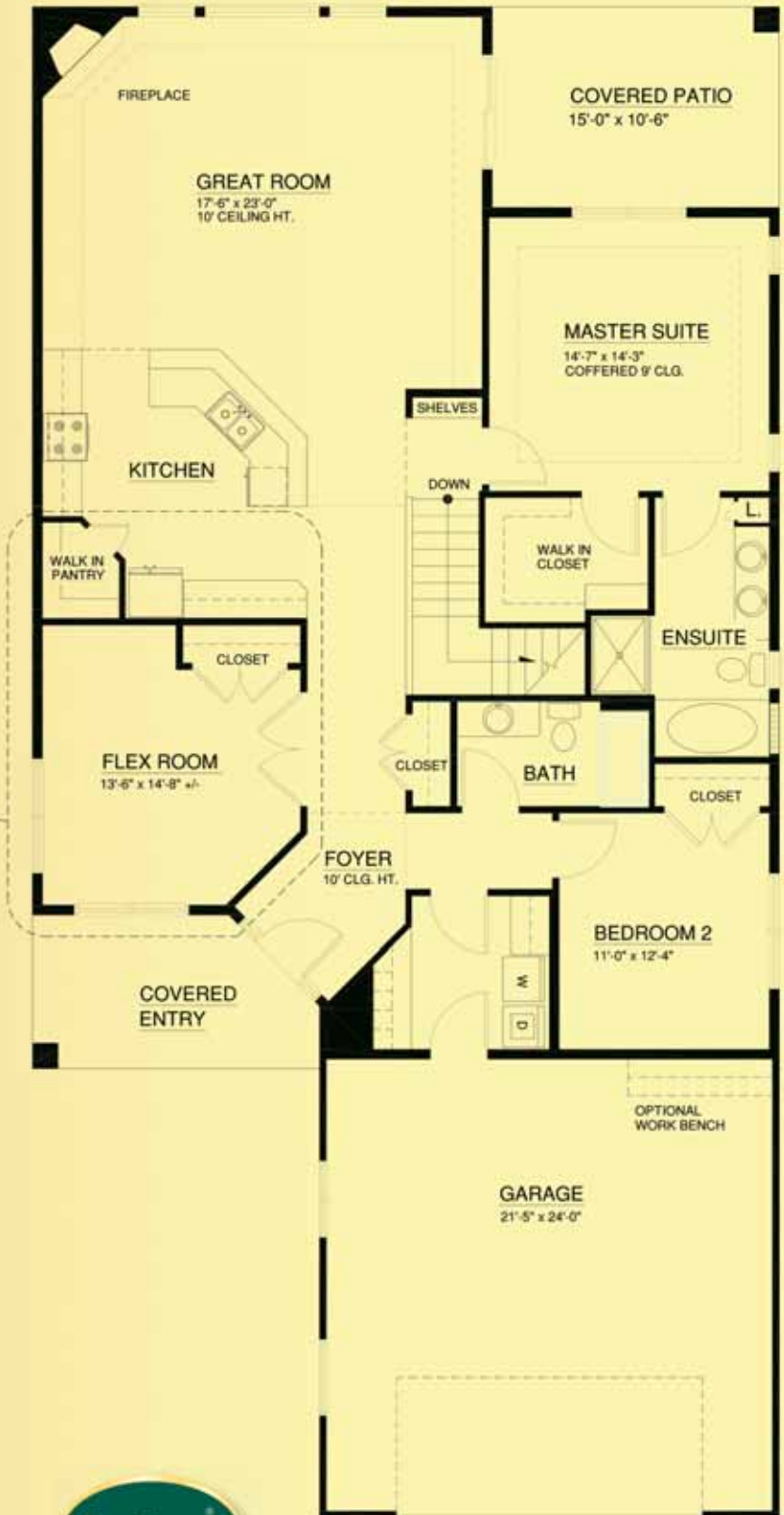


The Rosedale

Main 1,886 sq. ft.
2 Bedroom | 2 Bath



FORMAL DINING OPTION
WITH WALK-THRU PANTRY



Touchmark at Wedgewood
Elegant bungalows ... and beyond.

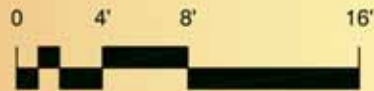
18333 Lessard Road
Edmonton, AB T6M 2Y5
780-577-5000

TouchmarkEdmonton.com

For illustration purposes only. Square footage, actual room sizes, and features may vary. See construction documents.

The Rosedale

Optional finished
basement 1,455 sq. ft.



Touchmark at Wedgewood
Elegant bungalows ... and beyond.

18333 Lessard Road
Edmonton, AB T6M 2Y5
780-577-5000
TouchmarkEdmonton.com

For illustration purposes only. Square footage, actual room sizes, and features may vary. See construction documents.