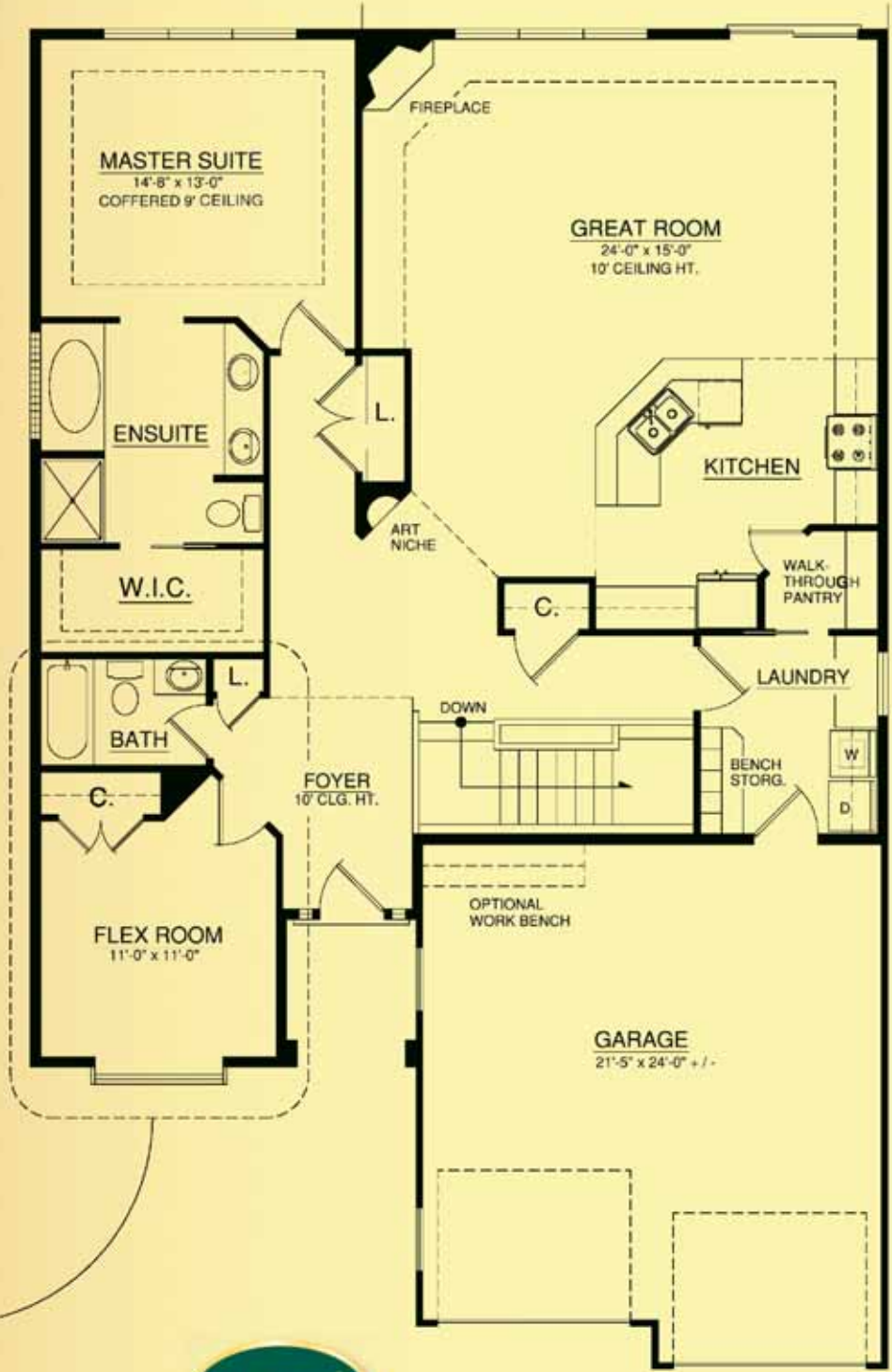


The Mayfair

Main 1,716 sq. ft.
2 Bedroom | 2 Bath



OPTIONAL PLAN add 44 sf



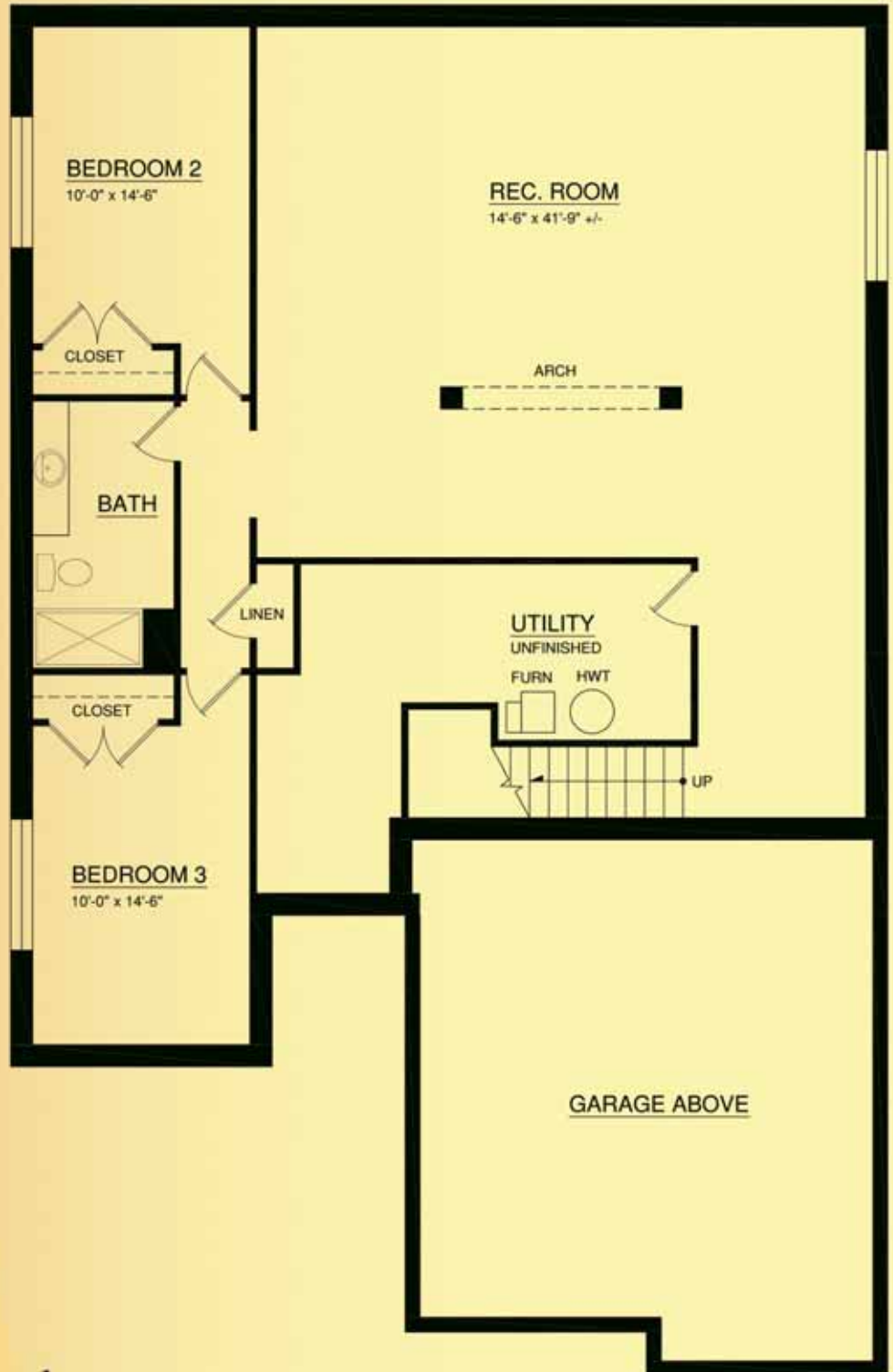
Touchmark at Wedgewood
Elegant bungalows ... and beyond.

18333 Lessard Road
Edmonton, AB T6M 2Y5
780-577-5000
TouchmarkEdmonton.com

For illustration purposes only.
Square footage, actual room sizes, and features may vary.
See construction documents.

The Mayfair

Optional finished
basement 1,343 sq. ft.



Touchmark at Wedgewood
Elegant bungalows ... and beyond.

18333 Lessard Road
Edmonton, AB T6M 2Y5
780-577-5000
TouchmarkEdmonton.com



For illustration purposes only. Square footage, actual room sizes, and features may vary. See construction documents.