

The Glencoe

Main 1,485 sq. ft.
2 Bedroom | 2 Bath



OPTIONAL PLAN add 28 sf



Touchmark at Wedgewood
Elegant bungalows ... and beyond.

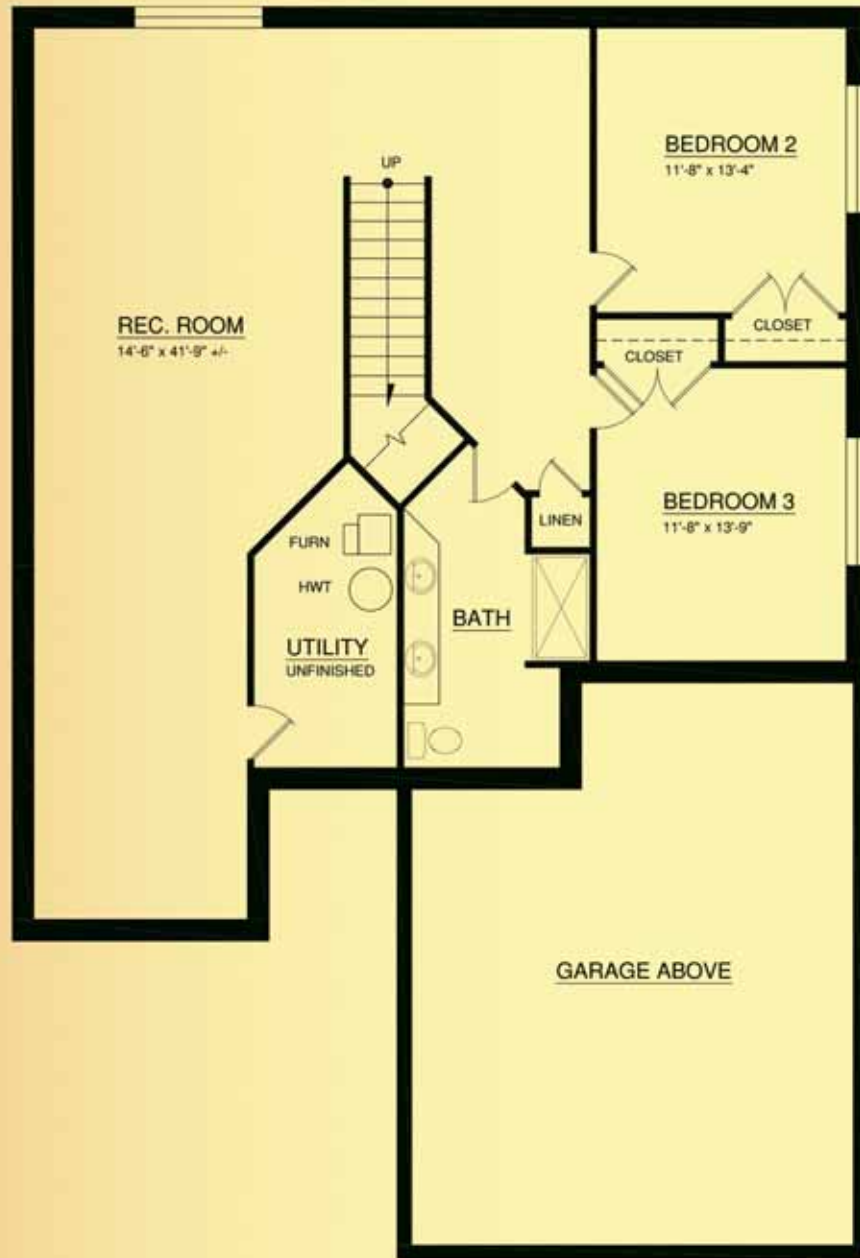
18333 Lessard Road
Edmonton, AB T6M 2Y5
780-577-5000

TouchmarkEdmonton.com

For illustration purposes only. Square footage, actual room sizes, and features may vary. See construction documents.

The Glencoe

Optional finished basement 1,237 sq. ft.



Touchmark at Wedgewood
Elegant bungalows ... and beyond.

18333 Lessard Road
Edmonton, AB T6M 2Y5
780-577-5000
TouchmarkEdmonton.com



For illustration purposes only. Square footage, actual room sizes, and features may vary. See construction documents.